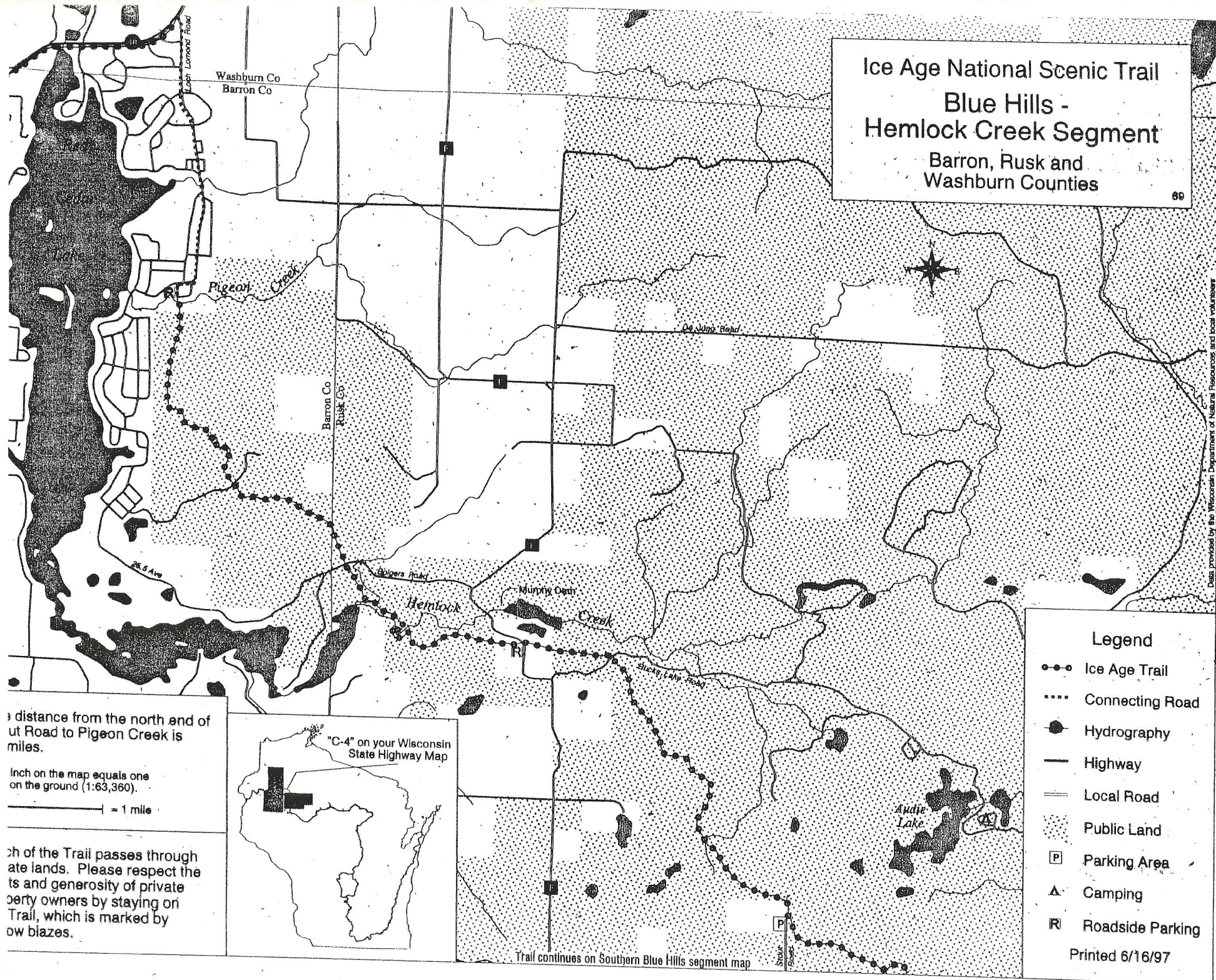


# Ice Age National Scenic Trail Blue Hills - Hemlock Creek Segment

Barron, Rusk and  
Washburn Counties



Data provided by the Wisconsin Department of Natural Resources and local volunteers

### Legend

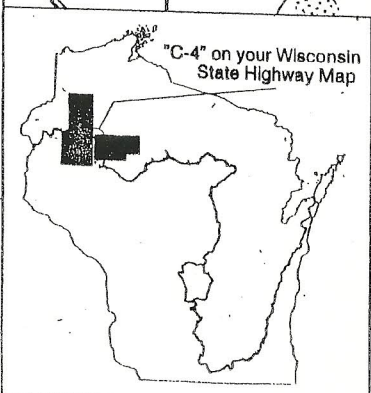
- Ice Age Trail
- ..... Connecting Road
- Hydrography
- Highway
- Local Road
- Public Land
- Ⓟ Parking Area
- △ Camping
- Ⓡ Roadside Parking

Printed 6/16/97

Distance from the north end of  
DeWing Road to Pigeon Creek is  
1.5 miles.

Inch on the map equals one  
mile on the ground (1:63,360).

— = 1 mile



Most of the Trail passes through  
private lands. Please respect the  
rights and generosity of private  
landowners by staying on  
the Trail, which is marked by  
yellow blazes.

Trail continues on Southern Blue Hills segment map

